

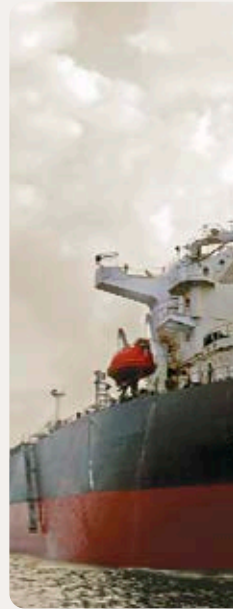
# ENERGY FOR EXCELLENCE

The Eletson Journey



# ENERGY FOR EXCELLENCE

The Eletson Journey



All on board  
a journey with  
a common goal



For the past five decades, Eletson has built an enviable reputation as a leader in the transportation of oil products and gas cargoes.

Success in our industry does not come by chance. Rather, it has been the outcome of hard work in professionally meeting our clients' needs and a firm commitment to quality. This has been Eletson's approach ever since we started in 1966 and it has been vital in gaining the respect of the international market.

Today, our commitment to operating according to the industry's highest standards is stronger than ever. We only employ highly qualified people and we invest in their professional development on a continuous basis. We are a world leader in international seaborne transportation specializing in the transport of refined petroleum products, liquefied petroleum gas ("LPG"), ammonia (NH<sub>3</sub>) and liquefied ethylene gas ("LEG").



## vision



Our vision is clear: to be recognized as the best in class oil products and gas cargoes marine transportation shipping company worldwide

From our offices in Piraeus, London and Stamford, Connecticut and Singapore, we charter our versatile, high-quality and modern fleet of 32 vessels to customers, including major international oil, LPG, LEG and ammonia companies and traders.

After many years of environmental sensitivity, we continue to evaluate and implement even stricter policies.

Each of these steps is integral to our vision: to be recognized as the best in class oil products and gas cargoes marine transportation shipping company worldwide.

In October 2013, pursuant to our expansion strategy, we entered into a joint venture with affiliates of the Blackstone Group to pursue targeted acquisitions in the LPG sector.

Through the subsidiary, Eletson Gas, we own and operate 5 LPG and 9 LEG carriers.

Our fleet is one of the world's largest LPG/LEG transportation company by capacity.

# ENERGY FOR EXCELLENCE

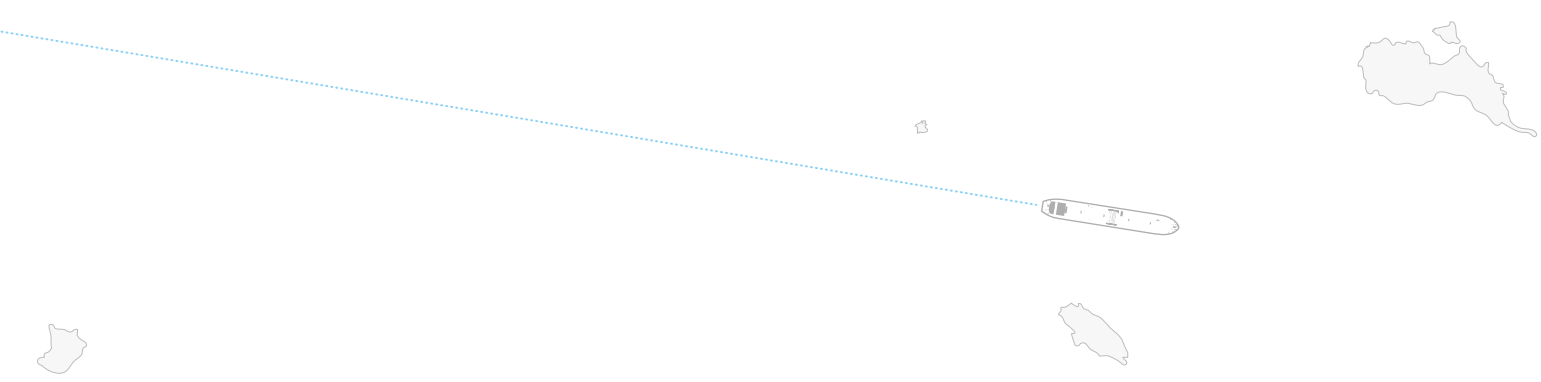
The Eletson Journey



Safety is the  
compass that always  
sets our course



Eletson is well-established in the marine transportation market thanks to certain underlying principles. Nourishing a culture of excellence and attention to detail, our belief in people and teamwork, our strong focus on our customers' requirements, together with our commitment to ethical standards, are the core values that have contributed to our success and have given us the energy to move forward.





Our values are not just words. They have helped us navigate all challenges and will guide us in the future

Safety is the bottom line and the end result to which all our principles converge. We are dedicated to work with all our know-how and experience for the safety of our people, our environment and the cargoes entrusted to us. The importance of safety, as well as our other goals, has required us to build a technologically advanced fleet, manned by a team of highly qualified people. It has led to the introduction of systems and processes which help us monitor, assess and improve our services.

It necessitates extensive training and continuous re-training of our seagoing and shore-side personnel, so that we can be the best we can be.

In our view, our greatest achievement is completing the voyage on time, injury-free and without a drop of oil spilled. Time after time.

# ENERGY FOR EXCELLENCE

The Eletson Journey



## Commitment to Ethical Standards:

The compass that guides  
our corporate activities

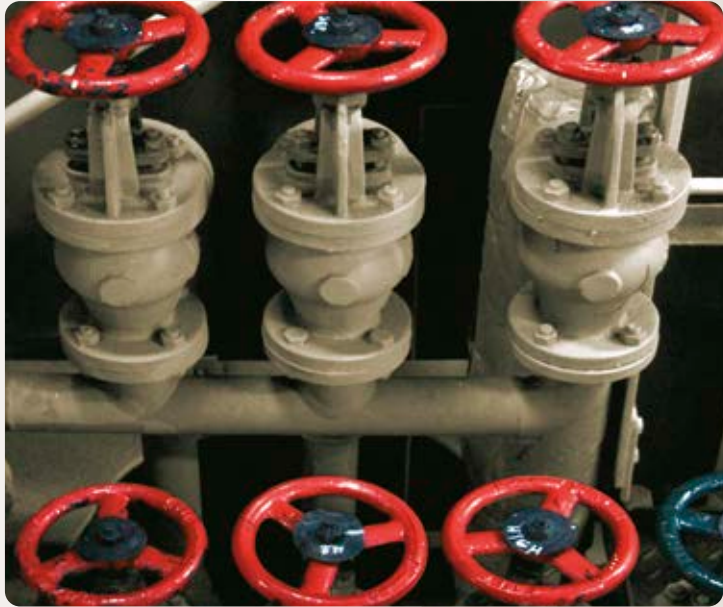
We believe that responsibility, respect and consistency in our business behaviour and being true to our wider community values, are the keys to our success.

## Pursuit of Excellence:

A demanding yet  
rewarding journey

Excellence can only be achieved over time and through an unbending commitment to provide services of the highest standard.





### Promoting Teamwork:

Running an efficient ship requires an empowered crew

The only way to solve problems and achieve our business goals is through teamwork. Convinced of this, we encourage lateral thinking, positive relationships and an open exchange of ideas in the working environment, whether on ships or in the office.

### Dedication to Customers:

Customer service includes anticipating and exceeding customers' needs

Our goal is to create long-lasting relationships with our customers, based on our performance as well as on mutual commitment and integrity.



# ENERGY FOR EXCELLENCE

The Eletson Journey



## Navigating towards a worthwhile destination



Our job is to transport oil products and gas cargoes at sea. We appreciate that the transportation of energy keeps the world moving and yet in our view it's more than that. Our work contributes to global and local economic development, fuelling growth and stability. If we can accomplish it in an environmentally sound manner this contributes to safety and sustainability.





## mission



In providing high quality and environmentally safe marine transport, we add value to our customers, employees, shareholders and the community as a whole.

Through committing ourselves to the highest quality and ethical standards, we have established a company culture that our people are likely to uphold outside the workplace, too.

Eletson is in business to add value to its customers, employees, shareholders, and the community as a whole, positively affecting growth and prosperity. This wider mission is what truly inspires us and gives us the energy to move forward.

Our journey so far has been one of steady advancement in a consistent direction and we never forget its purpose.



## Our people are key to propelling our vision forward



Our company has long recognized the importance of state-of-the-art technology. But we believe that our people actually make the difference and we take care to employ only the very best.

Continuous investment in cadet programmes ensures that people joining the Eletson team have received extensive training from the very start. Constant evaluation and encouragement along the way help them to further hone their talents and skills, increasing their motivation to deliver world-class performance. Our seafarers benefit from a variety of professional development programmes, including pre-embarkation and onboard training, computer-based training, and further education provided ashore by industry-recognized institutions.

## human capital



The Eletson family comprises of qualified seafarers and a skillful shore-based team. We work together to ensure that our ships sail efficiently and safely to their destinations.

The company's human face is not limited to appearances, or even to the Eletson family. Externally, a policy of corporate social responsibility leads to specific projects benefiting our neighborhood and the wider environment in which we all live.

Starting modestly, we have resolved to further develop Eletson's wider social contribution in years to come.



# ENERGY FOR EXCELLENCE

The Eletson Journey



## Ships built to the most demanding standards - our own



As an industry seaborne transportation of energy is still evolving. With a long track record of managed renewal, we at Eletson are attuned to new challenges.

In fact, we welcome them. Our fleet of medium and long range double-hulled product tankers, LPG/NH3 and LEG are all designed and built to the highest specifications, based on years of accumulated experience.





We have invested in a fleet that guarantees efficient transportation and the highest possible safety for people, cargoes and the environment.

Whether Handymax, Panamax or Aframax size, our tankers are designed to be safe, efficient and reliable. Unlike larger tankers, they can navigate through restricted waters, bringing cargoes closer to their ultimate destination.

In growing our fleet we have applied the 'sister ship' principle; this uniformity helps us maintain the highest levels of efficiency and safety throughout a ship's service life. Our latest building programme sees the addition of new, top of the range product tankers keeping our fleet young.

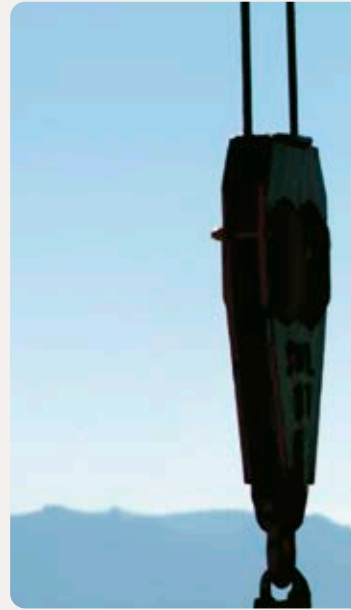
In 2006, we strategically diversified our operations through an expansion into the LPG sector and in 2013 into LEG sector, a niche shipping sector with attractive fundamentals and high barriers to entry, given the requirements for longterm relationships with industrial and petrochemical customers and the more complex technical operations.

Today Eletson owns and operates one of the world's largest fleets of medium and long range product tankers. The fleet presently consists of 18 double hull tankers with a combined capacity of 1,423,559 dwt, 5 LPG/NH3 carriers with a combined capacity of 174,730 cbm and 9 LEG carriers with capacity of 108,000 cbm.

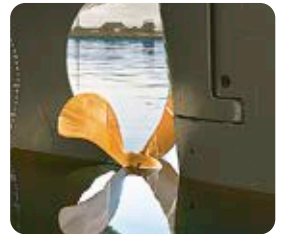
Most of our vessels sail under the Greek flag.

# ENERGY FOR EXCELLENCE

The Eletson Journey

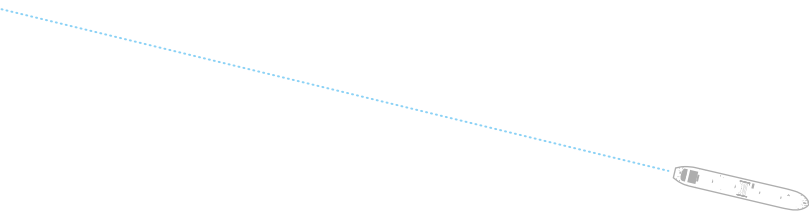


As a company with long term plans, we take sustainability to heart



Our planet is becoming increasingly fragile. As the environment comes under threat, there are implications for the earth's climate, sea levels, biodiversity, public health and global food supplies.

Our society demands responsibility for preventing pollution at sea, and beyond this a contribution from shipping transport towards curbing greenhouse gases. Eletson's goal is sustainability and we do everything we can in our everyday operation and planned development to ensure the environment does not suffer.





Making our living out of the sea, we are at the forefront of efforts to protect it.

As one of the very first companies to anticipate modern environmental requirements, we pro-actively demanded double-hull vessels from an early stage. We now have more than 30 years' experience in building, operating and maintaining such vessels.

All our operating procedures go beyond the standards set by international law and these have helped to encourage a distinctly environment-friendly mentality among our people. We have implemented management systems certified to ISO 9001:2015, ISO 14001:2015 and ISO 50001:2011 standards to embody and manage our commitment to quality and environmental protection.

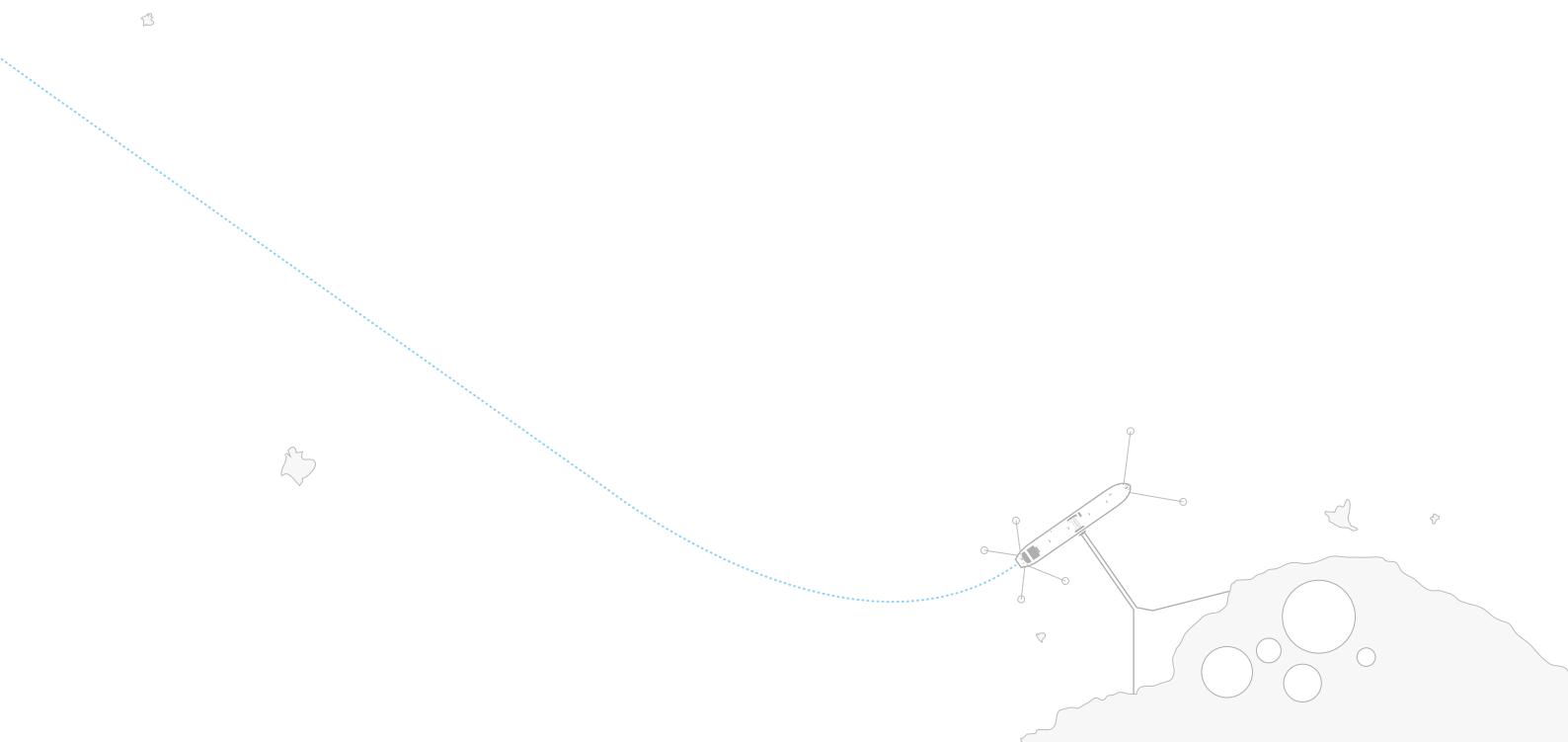
Eletson's goal of 'zero accidents and zero spills' is behind every single detail of our operations.

# ENERGY FOR EXCELLENCE

The Eletson Journey



The energy  
to advance further





our future



The next port of call announces the start of a new voyage.  
The mission of a dedicated shipping company never ends.

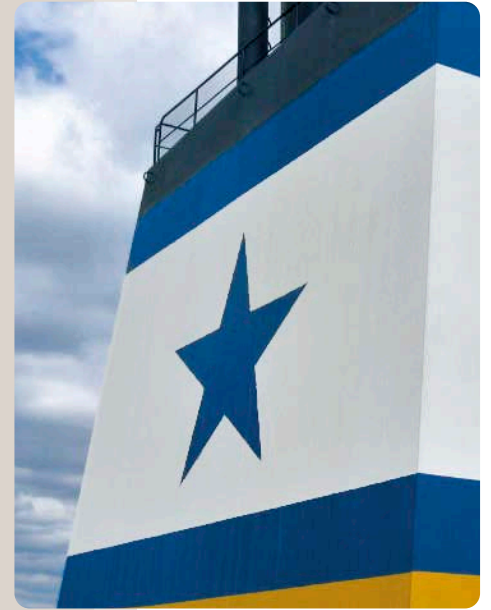
Eletson can look back on a successful past, but this would not have been possible without keeping tomorrow's challenges always in view. We are firmly committed to the renewal of our fleet and the continuous improvement of everyone at Eletson. Zero accidents and zero spills will remain the principle at the heart of all our operations. Our robust entry into the LPG, LEG market is supported by this commitment just as it continues to govern our longstanding operations in the product tanker sector.

We are determined to remain at the forefront of our industry and maintain our leadership position in maritime transportation of energy well into the future.

We value our long-lasting relationships with customers, suppliers and business associates.

Whether based in our offices in Piraeus, London and Stamford, CT., or on our fleet of vessels sailing the world's seas, we will continue to set higher standards for ourselves and the market we serve.

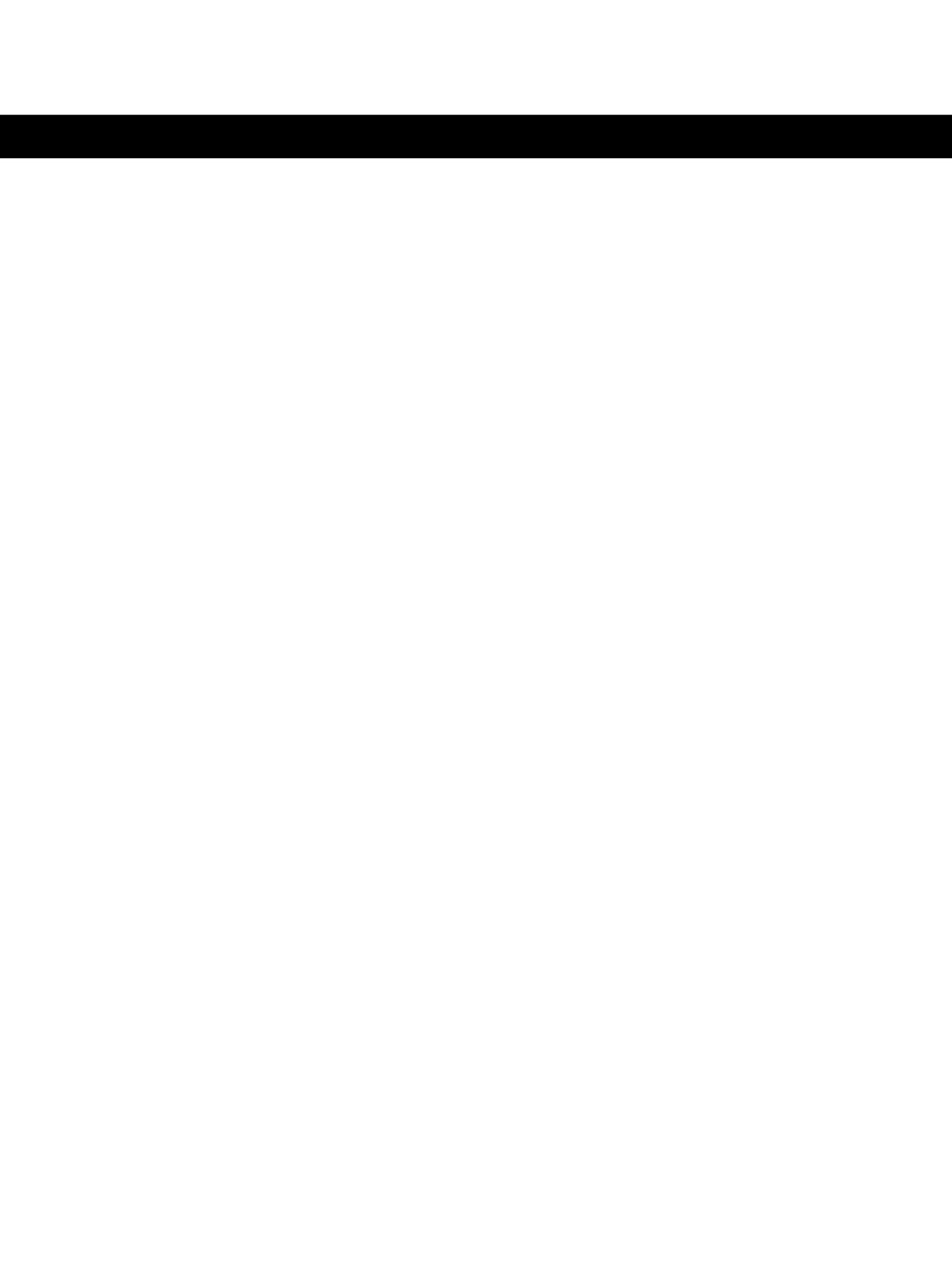




Eletson Corporation has developed, implements and maintains a Quality and Environmental Management System (QMS & EMS) that meets the ISO 9001:2015, ISO 14001:2015 and ISO 50001:2011 requirements and forms part of the Company's Integrated Health, Safety, Security, Quality and Environmental and Energy Management System (HSSQEEEnMS), in a way that demonstrates the Company's ability to consistently provide services that meet and exceed customer requirements and applicable regulatory requirements, commitment to continual improvement, environmental excellence and environmental responsibility.

The Company has been certified to BS EN ISO 9001:2015 (Quality Management System Standard), BS EN ISO 14001:2015 (Environmental Management System Standard) and ISO 50001:2011 (Energy Management System Standard) by LRQA (Lloyd's Register Quality Assurance), which holds accreditation from the United Kingdom Accreditation Service (UKAS).







[www.eletson.com](http://www.eletson.com)

**Eletson Corporation**  
**Eletson Maritime Inc - USA**  
**Eletson Maritime Ltd.**  
**Eletson Gas Maritime Ltd.**

118 Kolokotroni Street, GR 185 35 Piraeus, GREECE Tel : + 30 210 428 2300 Fax: + 30 210 428 2320  
1 Landmark Square Ste 424, Stamford CT 06901 USA Tel : +1 203 327 4134 Fax: +1 203 967 8685  
3 Crane Court, London, EC4A 2EJ UK Tel : + 44 20 7353 0555 Fax: + 44 20 7353 2520  
3 Crane Court, London, EC4A 2EJ UK Tel : + 44 20 7353 0555 Fax: + 44 20 7353 2520